

# RZR Top mounting Instructions EK 206LB5



[www.jstrongindustries.com](http://www.jstrongindustries.com)  
Toll free 877-444-4147

## Parts list pkg with Light bar

2-5/16" x 2" bolts  
2-5/16" lock nuts  
4-5/16" x 1" bolts  
6-5/16" flat washers  
2-Light bar angle base mounts  
1-Light bar with 4 100w lights  
4-Adhesive backed wire clamps  
1-Snap bushing

## Tools Required

1/2 in wrench  
1/2 in socket and ratchet  
5/16 drill  
5/16 drill bit  
5/8 drill bit

## Parts List Pkg with Top

4-5/16" X 4" bolts  
4-5/16" lock nuts  
8-5/16" flat washers  
4-5/16" fender washers  
2-Foam spacer blocks  
2-Rear mount plates  
2-Front mount plates

### Step 1

Place top on roll cage as shown in (fig 1) Install the light bar angle bracket on the top by placing the 5/16" x 4" bolt thru the front mount plate (Super man shield shape) inside the roll cage. The bolt should be placed from the bottom side up thru the top as shown in (fig 2) **Note: There are 2 holes in the front plate, use the hole that lines up with the corresponding hole in the top.**

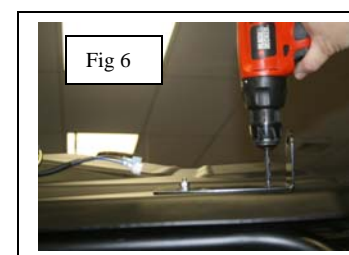
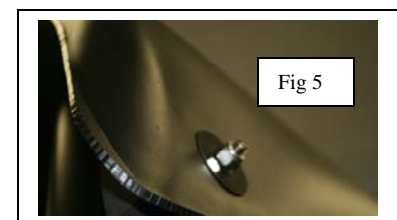
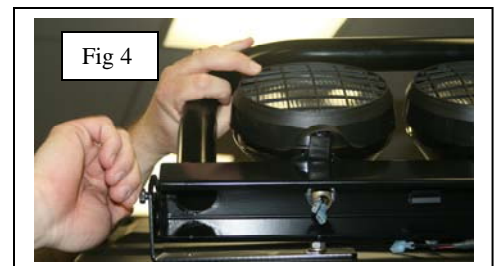
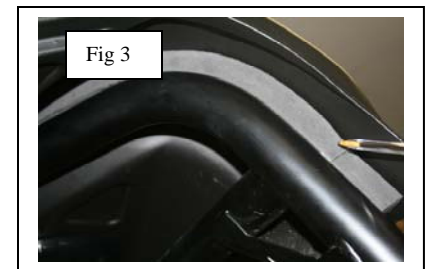
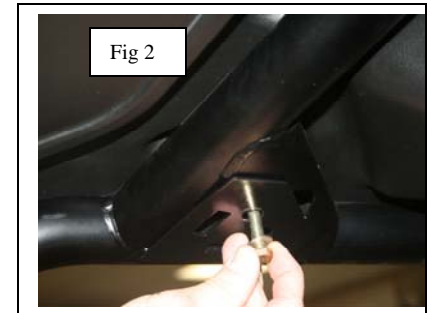
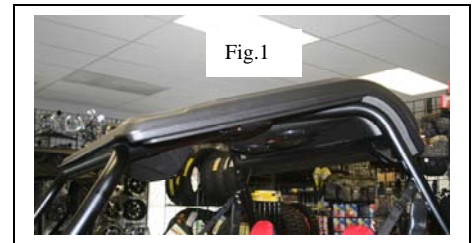
**Step 2** Mount the rear of the top by placing the rear spacer block on the roll bar as shown in (fig 3) The adhesive on the spacer block will attach to the top or the roll bar which ever way you prefer to place it. It's purpose is to fill the space between the roll cage and the top. Place the 5/16 x 4" bolt thru the rear mounting plate and into the top. Use the fender washer and locknut to secure. **Note: do not tighten at this point.(fig 5)**

### Step 3

Place the light bar onto the angle brackets as shown in (fig 4.) At this time align the top and tighten the two 5/16 x 4 front bolts and the two 5/16 x 4 rear bolts. Note do not over tighten the rear. Tighten enough for 3 to 4 threads to pass thru lock nut as shown in (fig 5)

### Step 4

Mark the location of the 5/16 x 2"bolts in the angle bracket. Remove the light bar and drill two 5/16 inch holes thru the top and place the two 5/16 x 2 inch bolts with flat washer on both sides. (fig 6).





[www.jstrongindustries.com](http://www.jstrongindustries.com)  
Toll free 877-444-4147

**Step 5**

Next locate the plug in the middle of the top. This will either be a removable plug or a raised bubble that will need to be drilled with a 5/8 drill bit as shown in (figure 6a. ) Install 5/8 snap bushing into hole that was drilled. (bushing is shown in fig 6b)

Next remove the fuse panel by removing the screws in the front of the panel. Once removed, unplug the wiring harness from the fuse panel as shown in (fig 6c. ) Run this wire thru the hole you just drilled in the middle of the top. Replug the wiring harness into the fuse panel as it was originally.

**Step 6** Reinstall the light bar by using 5/16 x 1 inch bolt in the upper slots. This will allow the bar to remain tilted back so it can be wired to the harness.

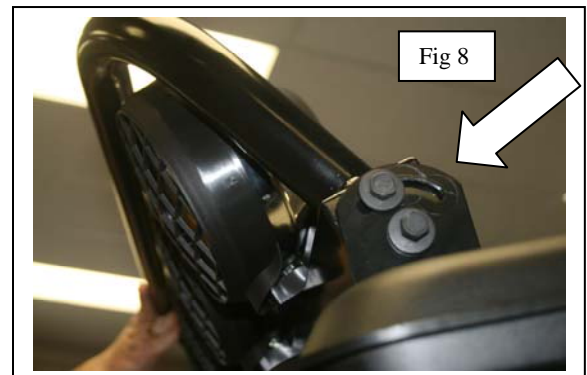
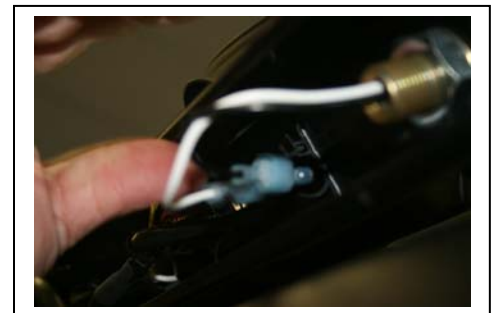
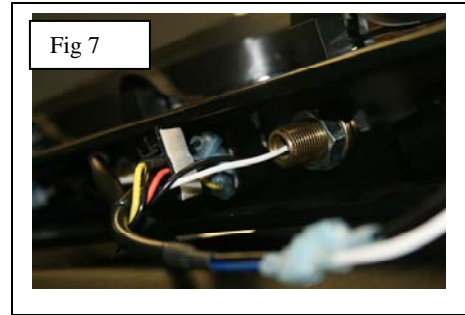
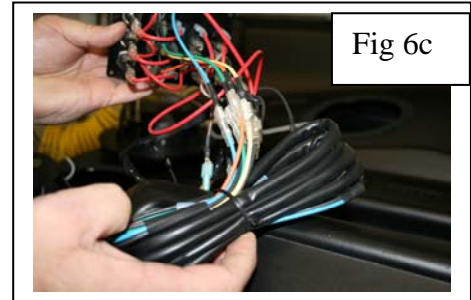
**Step 7** Plug the lights up from left to right in the following wire sequence

- Left Outside =Blue + Black**
- Left Inside = Green + Black**
- Right Inside =Yellow + Black**
- Right Outside =Red+ Black**

This sequence will assure that the light panel switches match the lights when turning the switches to the on position. Once the wires are plugged together use the clips and adhesive wire clamps to hold the wires in place (fig 7) and (fig 8)

**Step 8** Adjust the angle of the light bar and insert 2<sup>nd</sup> bolt into the end of the light bar bracket.

**Step 9** Hook the main power wire located at the left rear of the top to the power source. **Note: white wire is the positive and the black wire is the negative**



***WARNING: Disclaimer: Under no circumstances will J.Strong Industries or their parent companies accept liability for incidental or consequential damages. J.Strong top are not applicable, nor should the top be considered as protection against rollover, collision or other accidents that may result. Extreme care should be taken when operating a motorized vehicle and should only be operated by qualified, experienced operators***