

# RZR Top mounting Instructions EK 206



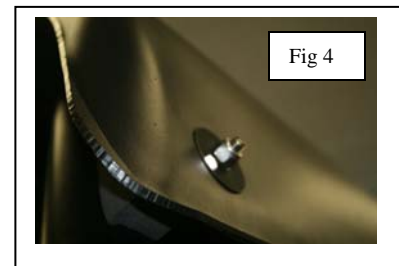
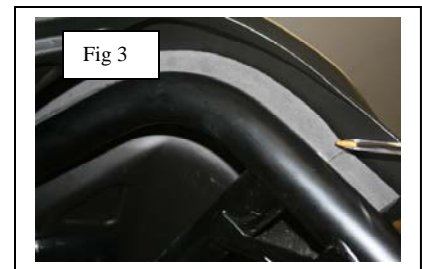
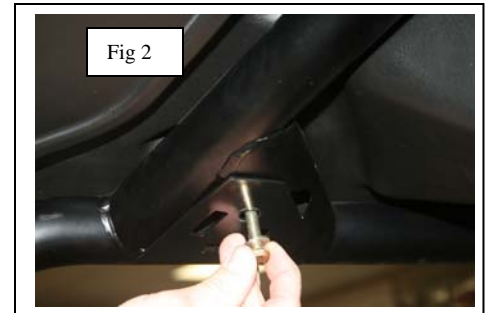
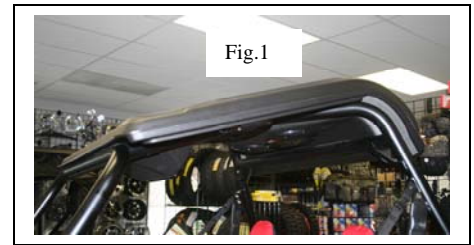
[www.jstrongindustries.com](http://www.jstrongindustries.com)  
Toll free 877-444-4147

## Parts List

4-5/16" X 4" bolts  
4-5/16" flat washers  
4-5/16" fender washers  
2-Foam spacer blocks  
2-Rear mount plates  
2-Front mount plates

## Tools Required

1/2 in wrench  
1/2 in socket and ratchet



## Step 1

Place top on roll cage as shown in (fig 1) Place the 5/16" x 4" bolt thru the front mount plate (Super man shield shape) inside the roll cage. The bolt should be placed from the bottom side up thru the top as shown in (fig 4) Place the fender washer and lock nut on the top side.

**Step 2** Mount the rear of the top by placing the rear spacer block on the roll bar as shown in (fig 3) The adhesive on the spacer block will attach to the top or the roll bar which ever way you prefer to place it. It's purpose is to fill the space between the roll cage and the top. Place the 5/16 x 4" bolt thru the rear mounting plate and into the top. Use the fender washer and locknut to secure. **Note: do not tighten at this point.(fig 4)**

**Step 3** Hook the main power wire located at the left rear of the top to the power source. **Note: white wire is the positive and the black wire is the negative**

***WARNING: Disclaimer: Under no circumstances will J.Strong Industries or their parent companies accept liability for incidental or consequential damages. J.Strong top are not applicable, nor should the top be considered as protection against rollover, collision or other accidents that may result. Extreme care should be taken when operating a motorized vehicle and should only be operated by qualified, experienced operators***