

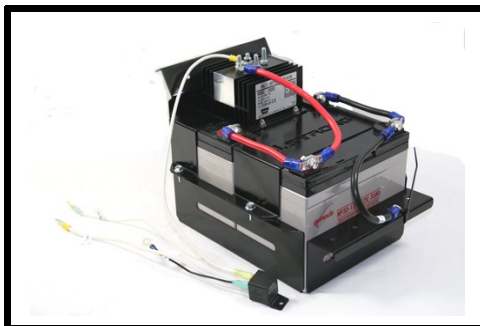
Instructions for JStrong Battery Isolator EK 112

Parts List:

1-Battery Back up with Isolator & relay assembly
6-Tek screws

Tools Needed:

1-3/8 socket
1-10mm socket
1-10mm wrench
1-cordless drill



Toll Free 1-877-444-4147
www.Jstrongindustries.com

Installation Instructions:

Step 1:

Move vent hose up and out the way. Install battery back up as shown in fig 1 (Be careful not to pinch your fingers or hands)

Step 2

Install 6 Tek screws, 4 in front and 2 in the rear of mount as shown in fig 2. (note: make sure the ground wire is installed under one of the front Tek screws as shown in Fig 3)

Step 3

Mount the relay in the battery box as shown in Fig 4

Step 4

Hook the 10 gauge with wire marked (start bat. Positive) to start battery as shown in fig 5

Step 5

Hook 16 gauge wire marked (fuse box) to Ignition fuse via the fuse tap as shown in fig 6

Step 6

Hook 16 gauge black wire (marked start batt. Neg (-)) to negative post on battery (fig 7)

Step 7

Installation is complete for the system. Hook all accessories to the secondary battery system as shown in fig 8

Step 8

Charge the secondary battery system 8 hrs at 10amps.

WARNING: Disclaimer: Under no circumstances will J.Strong Industries or their parent companies accept liability for incidental or consequential damages. J.Strong battery isolators are not applicable, nor should the battery isolator be considered as protection against rollover, collision or other accidents that may result. Extreme care should be taken when operating a motorized vehicle and should only be operated by qualified, experienced operators.

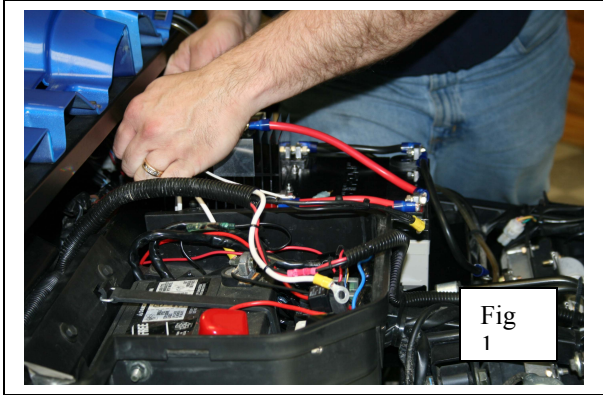


Fig 1

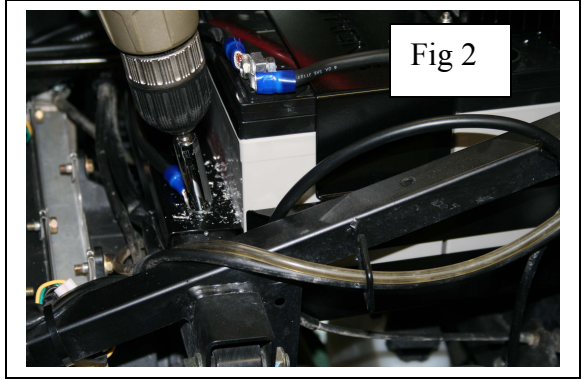


Fig 2

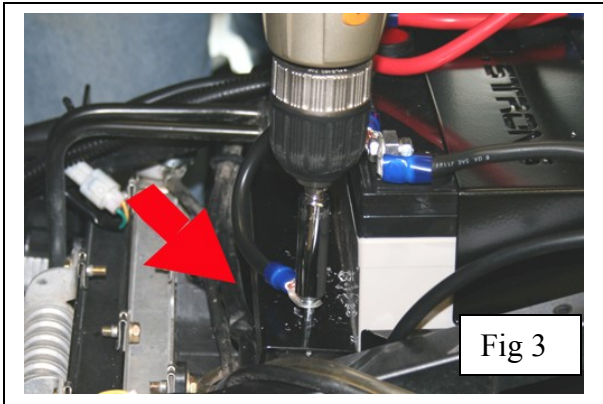


Fig 3

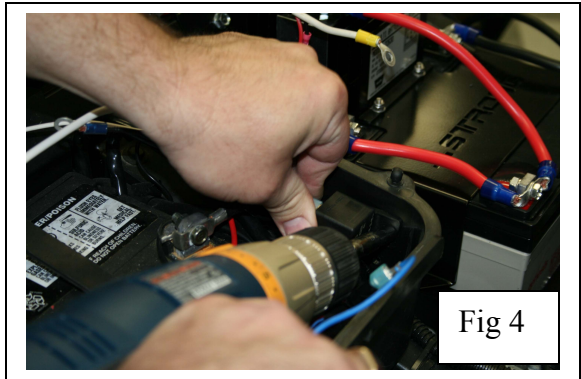


Fig 4

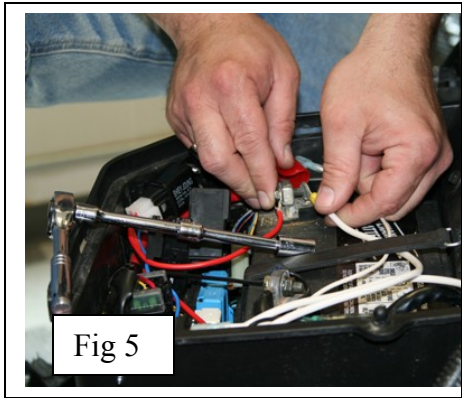


Fig 5

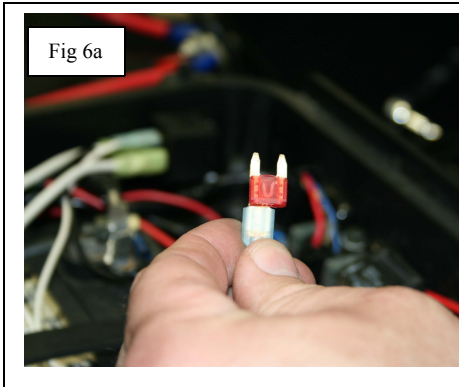


Fig 6a

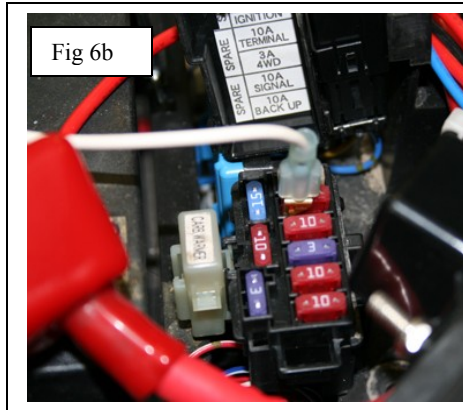


Fig 6b

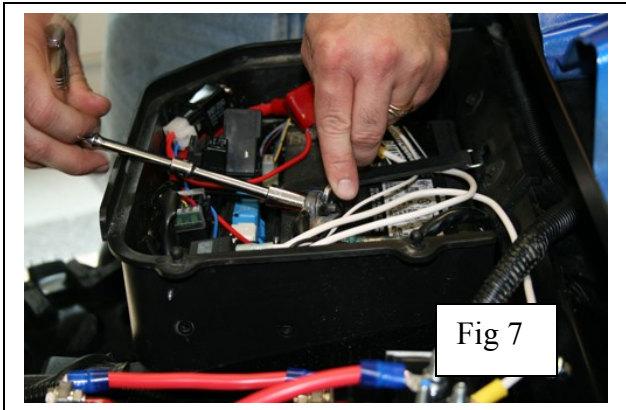


Fig 7

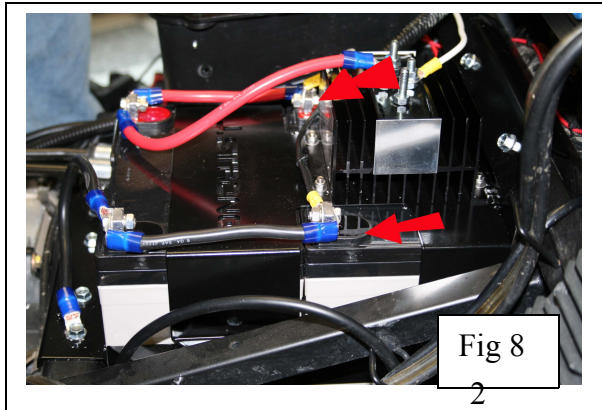


Fig 8